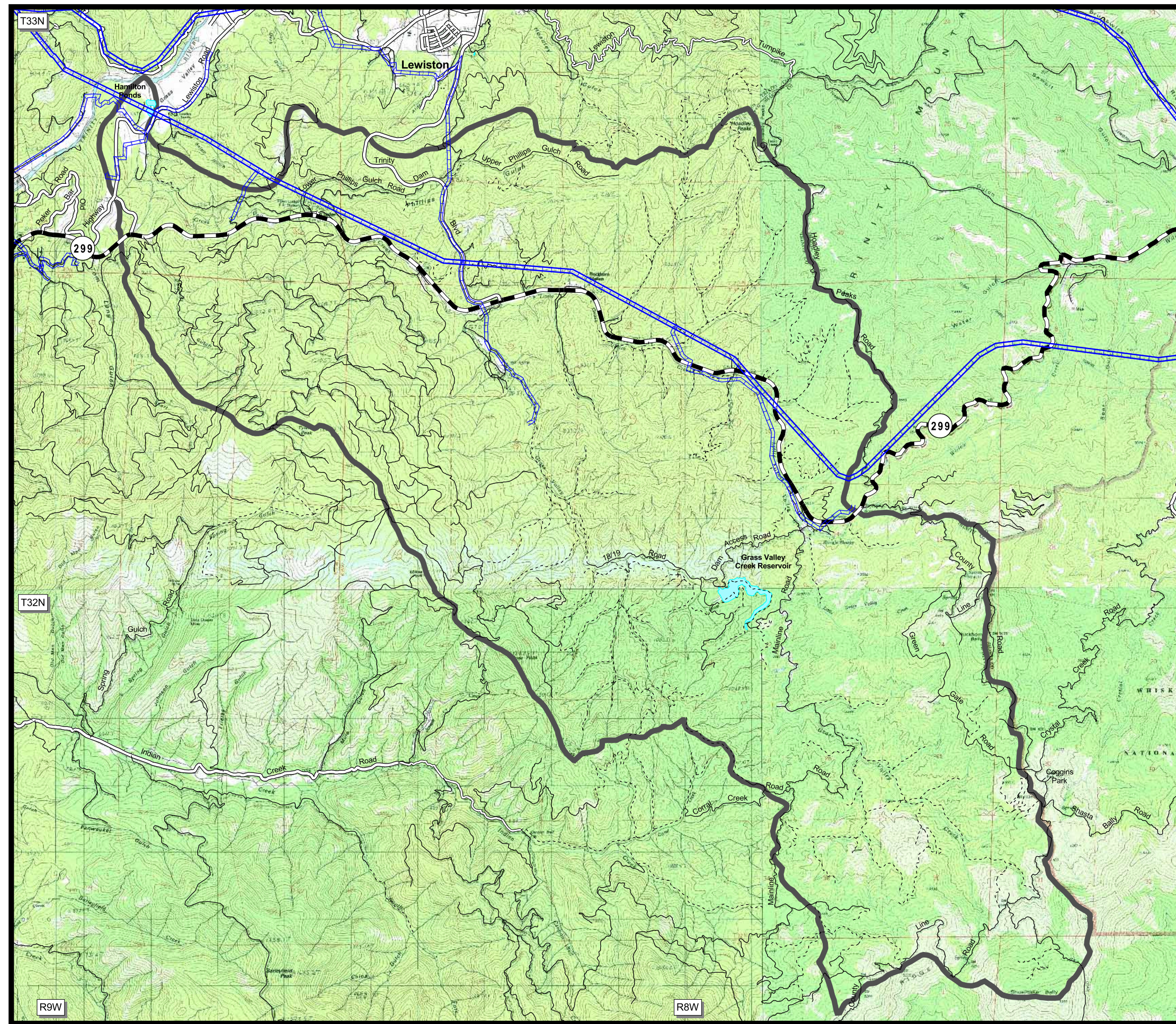
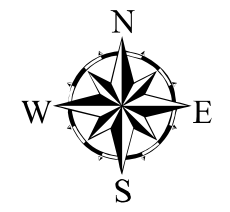
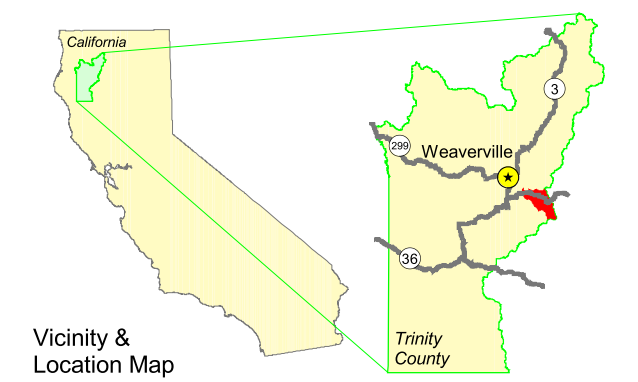


Grass Valley Creek Plan Area



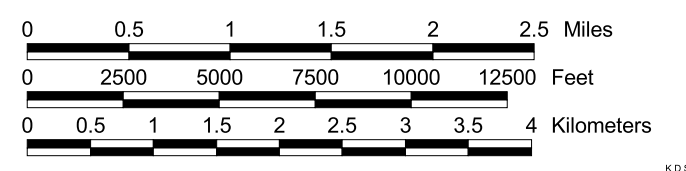
- Roads**
- Highway
 - Paved
 - Rocked
 - Native
 - Undrivable
- Powerlines**
- High Voltage
 - Low Voltage
- Water Bodies**
-
- Watershed Boundry**
-



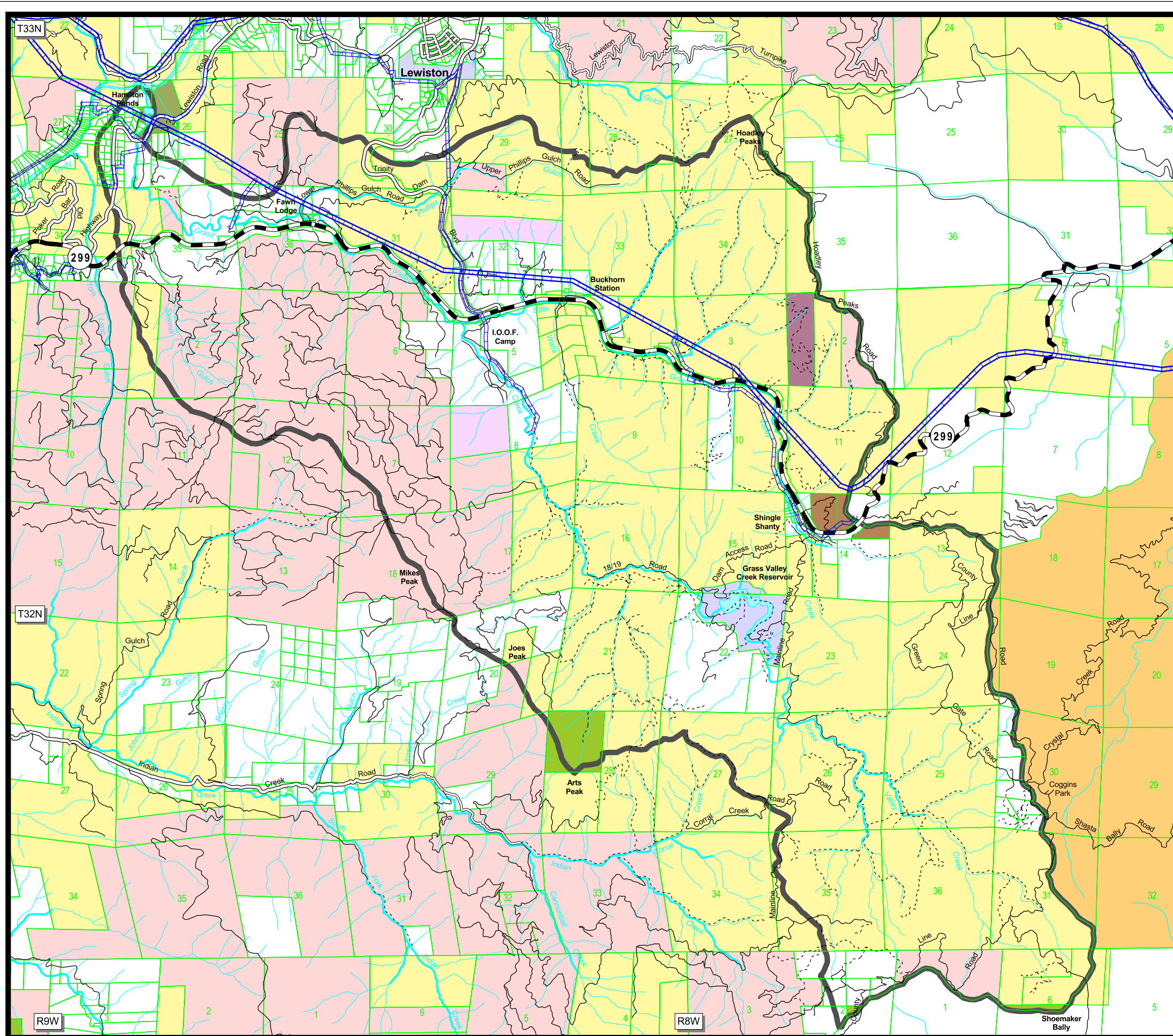
Scale: 1 = 60,000

Presented By
Kenneth Baldwin, RPF 1855

Prepared By
Trinity County Resource Conservation District
December 31, 2002



Grass Valley Creek Ownership



Ownership

- Private/Other
- Bureau of Land Management
- Bureau of Reclamation
- State of California
- Ca. Department of Water Resources
- National Park Service-Whiskeytown Unit
- Crane Mills, Inc.
- Roseberg Resources Company
- Sierra Pacific Industries
- Trans-Wood Company

Roads

- Highway
- Paved
- Rocked
- Native
- Undrivable

Powerlines

- High Voltage
- Low Voltage

Streams

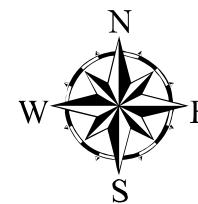
- Perennial
- Intermittent

Water Bodies

- Watershed Boundry

Parcels/Sections

- Parcels/Sections

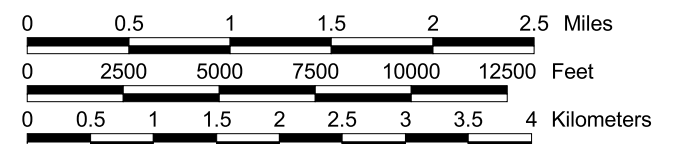


Presented By
Kenneth Baldwin, RPF 1855

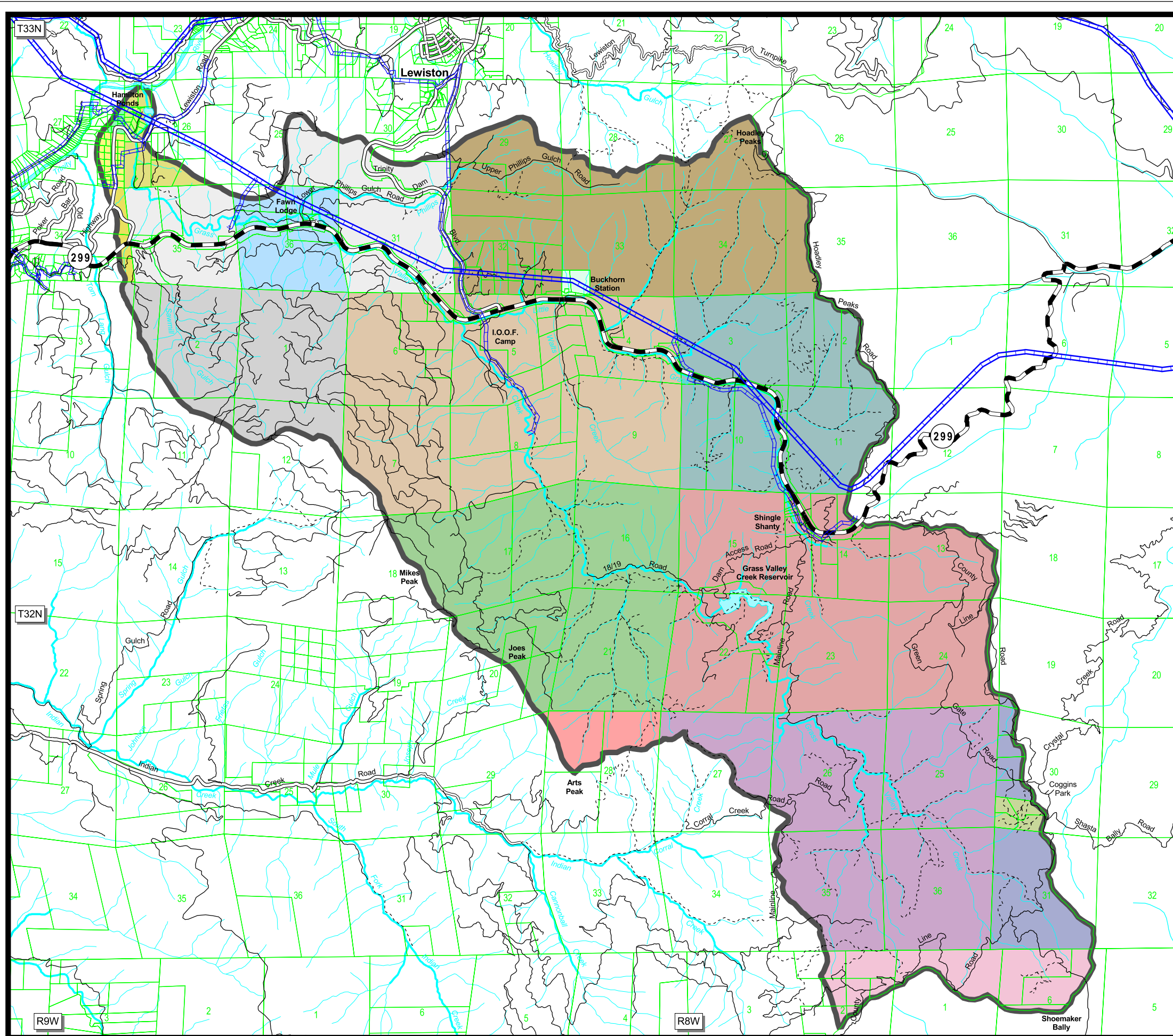
Prepared By
**Trinity County Resource
Conservation District**

December 31, 2002

Scale: 1 = 60,000



Grass Valley Creek Trinity County Assessor's Parcels by Book & Page



Book & Page

015-140	025-030
015-200	025-060
015-210	025-090
015-220	025-180
015-230	025-190
015-240	025-200
015-250	025-220
015-260	025-290
015-480	025-540
017-200	025-650
	025-660

Roads

- Highway
- Paved
- Rocked
- Native
- Undrivable

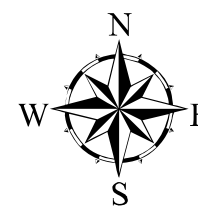
Powerlines

- High Voltage
- Low Voltage

Streams

- Perennial
- Intermittent

- Water Bodies**
- Watershed Boundry**
- Parcels/Sections**

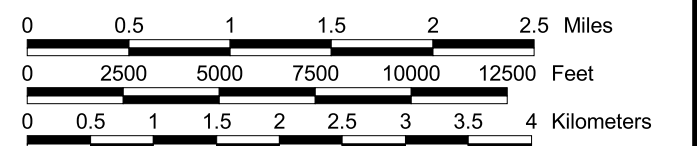


Presented By
Kenneth Baldwin, RPF 1855

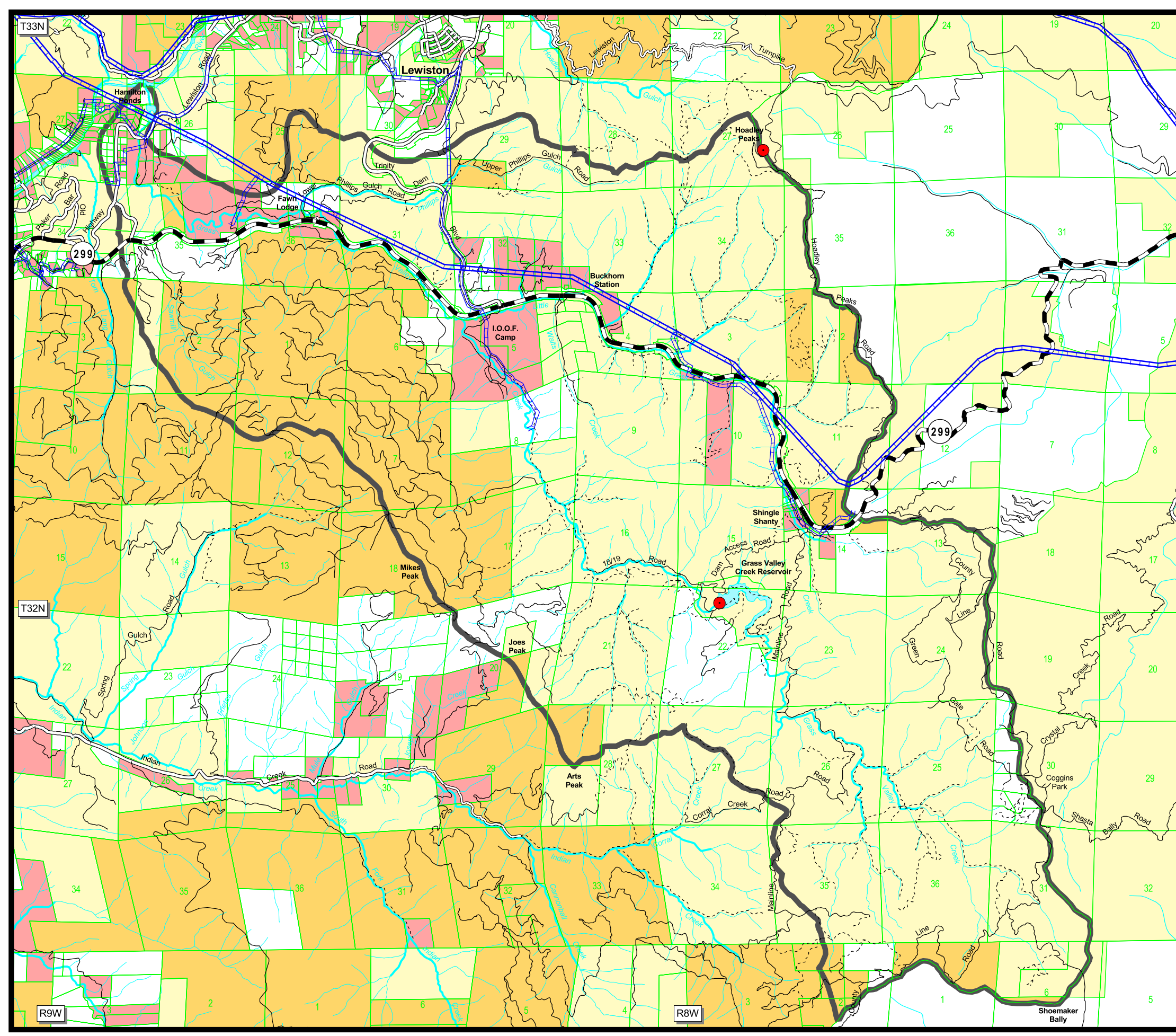
Prepared By
**Trinity County Resource
Conservation District**

December 31, 2002

Scale: 1 = 60,000



Grass Valley Creek Values at Risk



Lands at Risk

- Occupied Parcels
- Business Locations
- Public Lands
- Timber Production
- Other

Sites at Risk

-

Roads

- Highway
- Paved
- Rocked
- Native
- Undrivable

Streams

- Perennial
- Intermittent

Water Bodies

-

Watershed Boundry

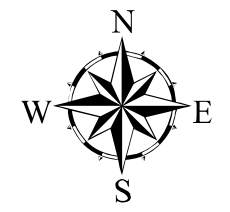
-

Powerlines

- High Voltage
- Low Voltage

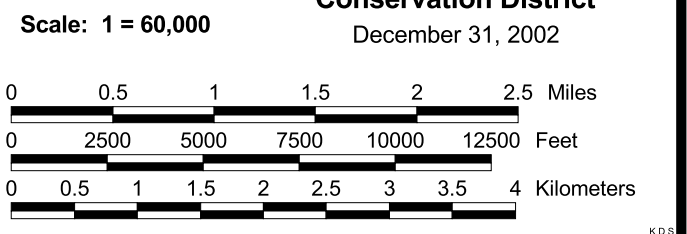
Parcels/Sections

-

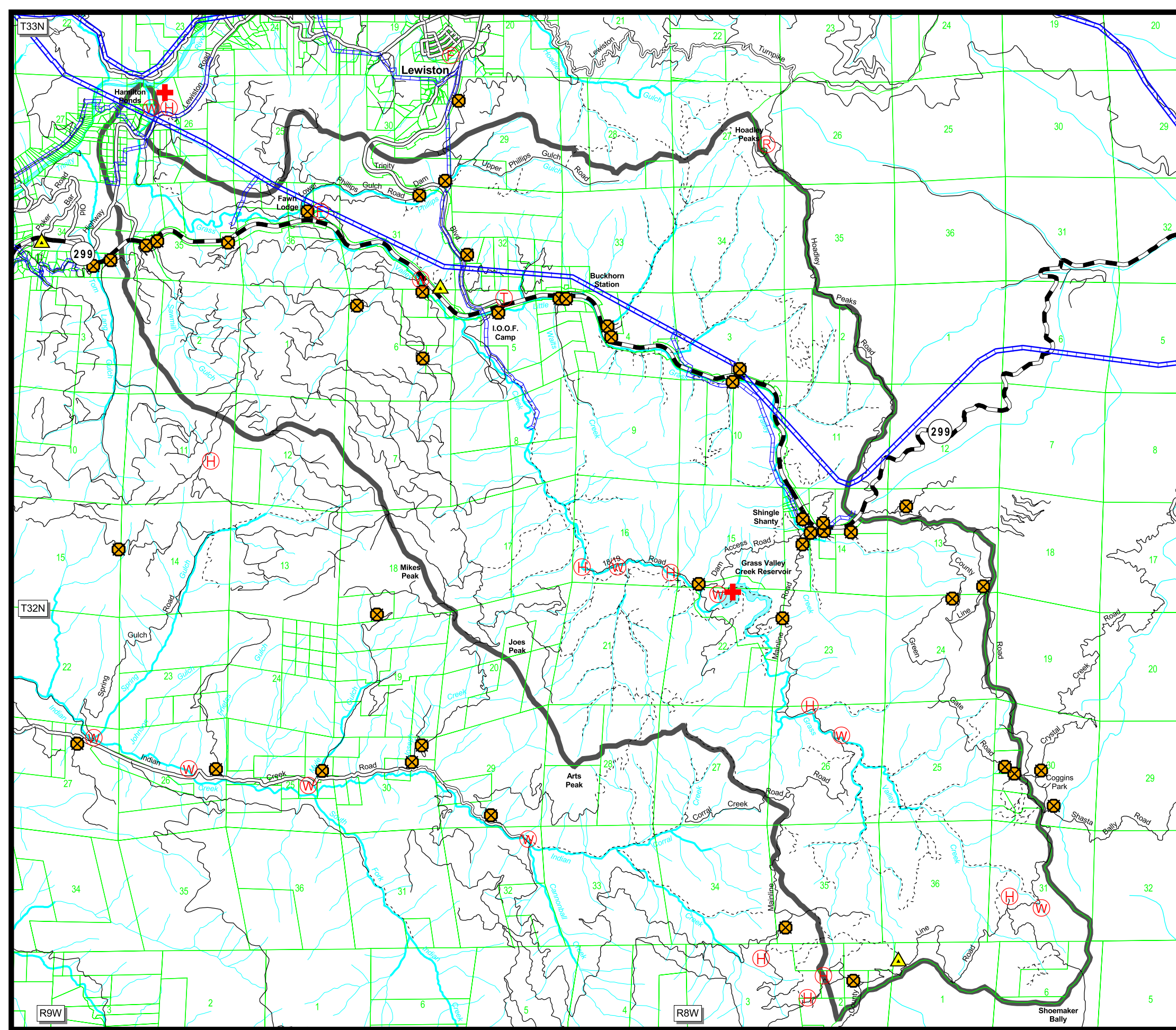


Presented By
Kenneth Baldwin, RPF 1855

Prepared By
Trinity County Resource Conservation District
December 31, 2002



Grass Valley Creek Fire Control Access & Infrastructure



Plan Features

- Fire Station
- Gate
- Helicopter Pad
- Safety Zone
- Tanker Fill
- Berm
- Telephone
- Repeater

Roads

- Highway
- Paved
- Rocked
- Native
- Undrivable

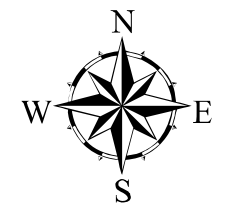
Streams

- Perennial
- Intermittent

- Water Bodies
- Watershed Boundary
- Parcels/Sections

Powerlines

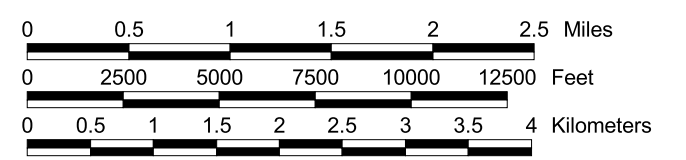
- High Voltage
- Low Voltage



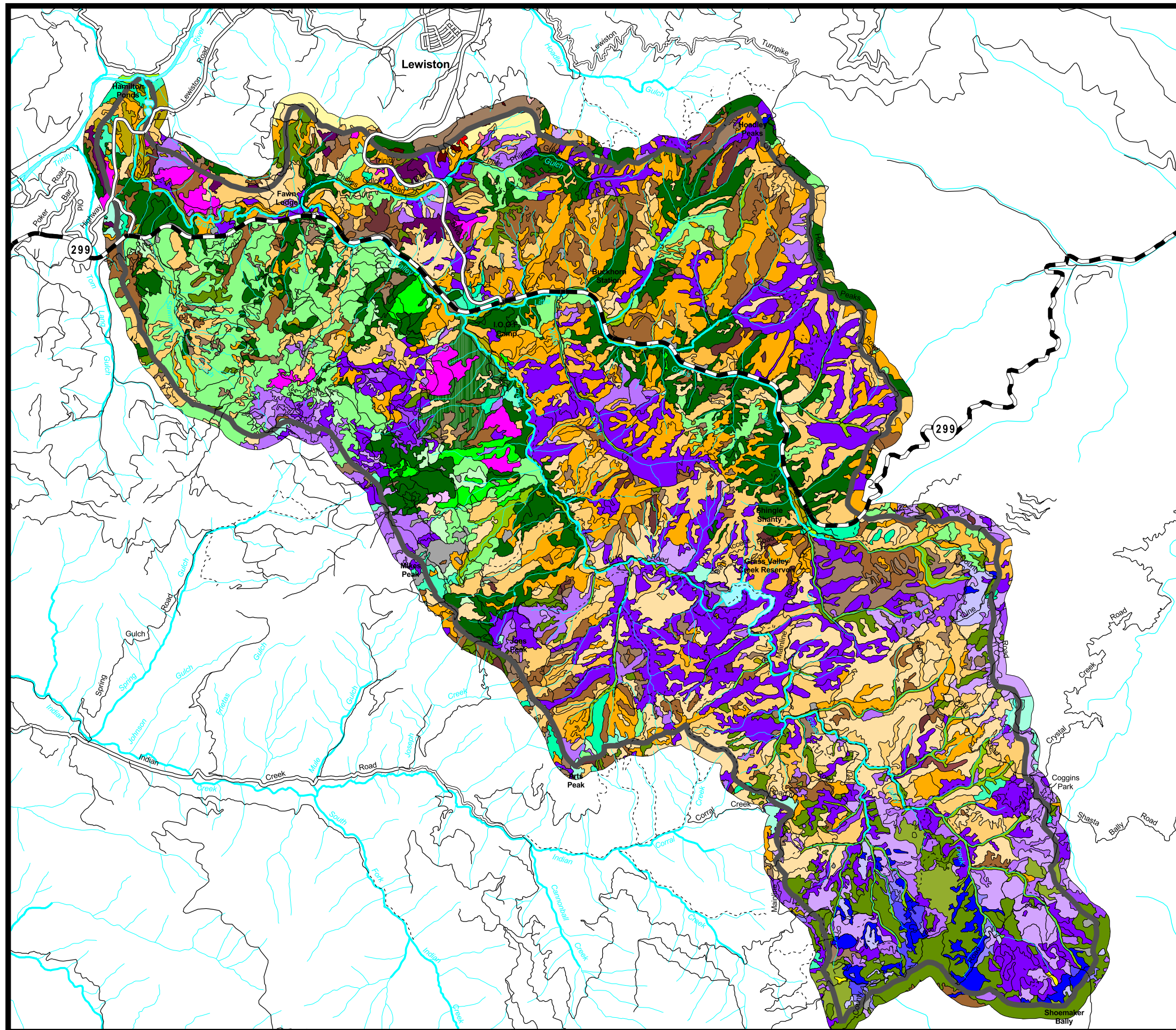
Presented By
Kenneth Baldwin, RPF 1855

Prepared By
**Trinity County Resource
Conservation District**
December 31, 2002

Scale: 1 = 60,000



Grass Valley Creek Primary WHR Habitat



WHR Habitat

ags--	mcp--	ppn--
ags+	mcp+	ppn+
bar--	mcp+	ppn+
cpc--	mhc--	ppn++
cpc+	mhc+	smc--
cpc+	mhc+	smc+
cpc++	mhc++	smc+
dfr--	mhw--	smc++
dfr+	mhw+	wfr--
dfr+	mhw+	wfr+
dfr++	mhw++	wfr+
kmc--	mri--	wfr++
kmc+	mri+	wtm+
kmc+	mri++	
kmc++		

Note: -- = Size Class 0-3, Canopy Closure S-P
 +- = Size Class 0-3, Canopy Closure M-D
 ++ = Size Class 4-6, Canopy Closure S-P
 +++ = Size Class 4-6, Canopy Closure M-D

Roads

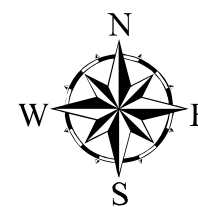
Highway
Paved
Rocked
Native
Undrivable

Streams

Perennial
Intermittent

Water Bodies

Water Bodies
Watershed Boundry

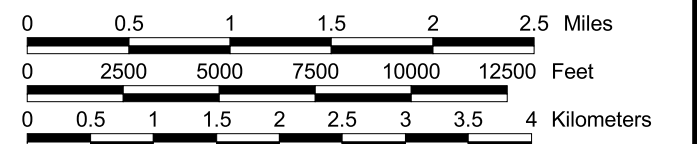


Presented By
Kenneth Baldwin, RPF 1855

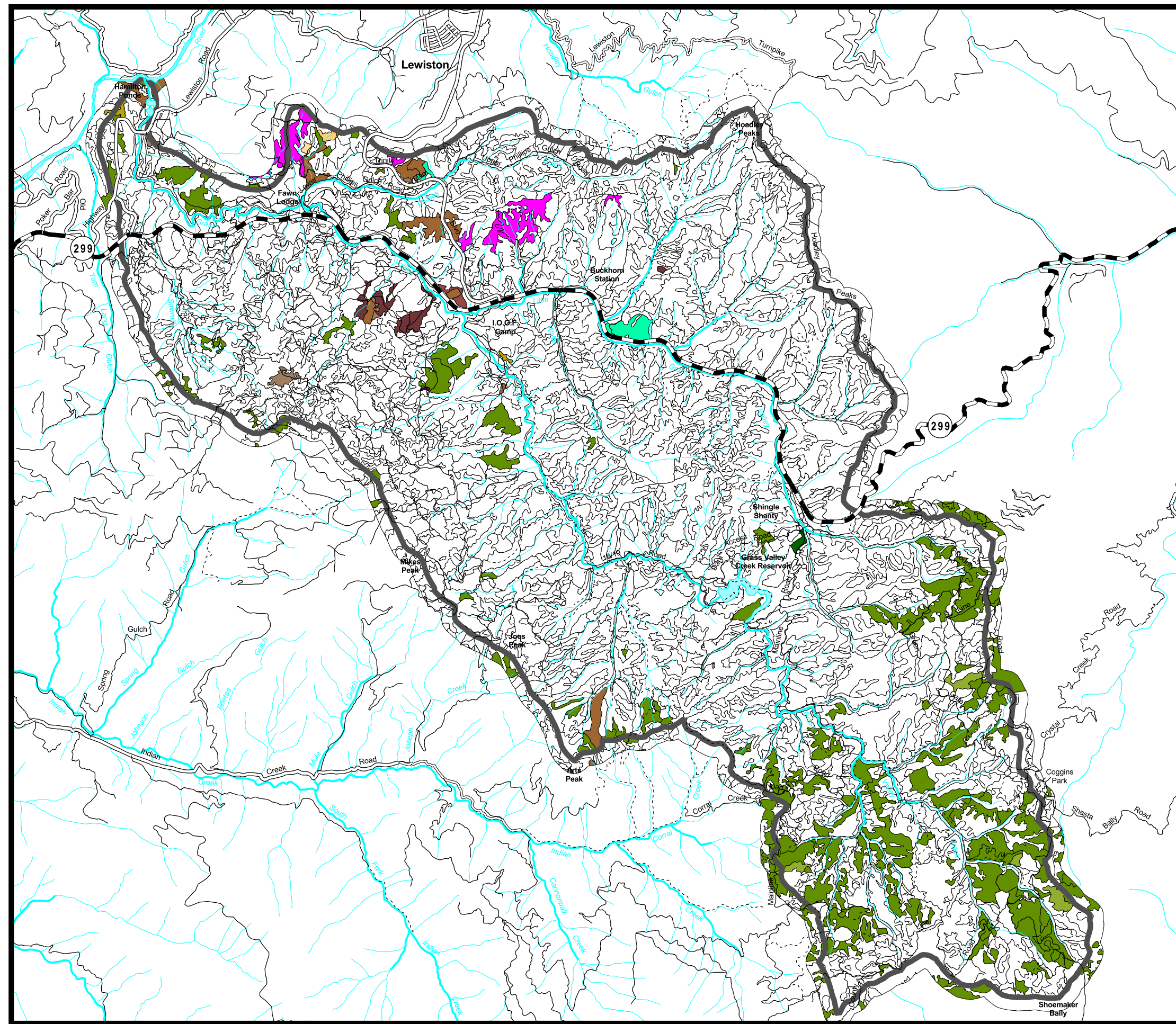
Prepared By
**Trinity County Resource
 Conservation District**

December 31, 2002

Scale: 1 = 60,000



Grass Valley Creek Secondary WHR Habitat



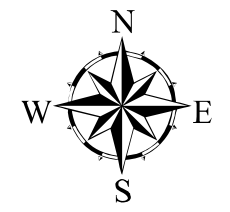
WHR Habitat

ags--	mcp--	ppn--
ags+	mcp+	ppn+
bar--	mcp+	ppn+
cpc--	mhc--	ppn++
cpc+	mhc+	smc--
cpc+	mhc+	smc+
cpc++	mhc++	smc+
dfr--	mhw--	smc++
dfr+	mhw+	wfr--
dfr+	mhw+	wfr+
dfr++	mhw++	wfr+
kmc--	mri--	wfr++
kmc+	mri+	wtm+
kmc+	mri++	none
kmc++		

Note: -- = Size Class 0-3, Canopy Closure S-P
 +- = Size Class 0-3, Canopy Closure M-D
 ++ = Size Class 4-6, Canopy Closure S-P
 +++ = Size Class 4-6, Canopy Closure M-D

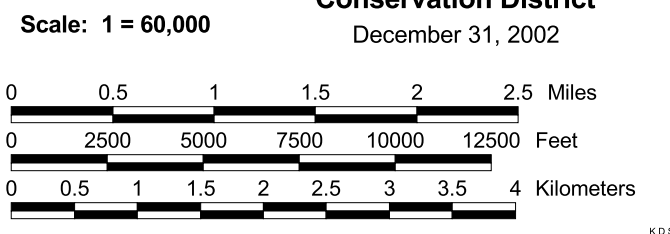
Roads

Highway	Perennial
Paved	Intermittent
Rocked	Water Bodies
Native	Watershed Boundry
Undrivable	

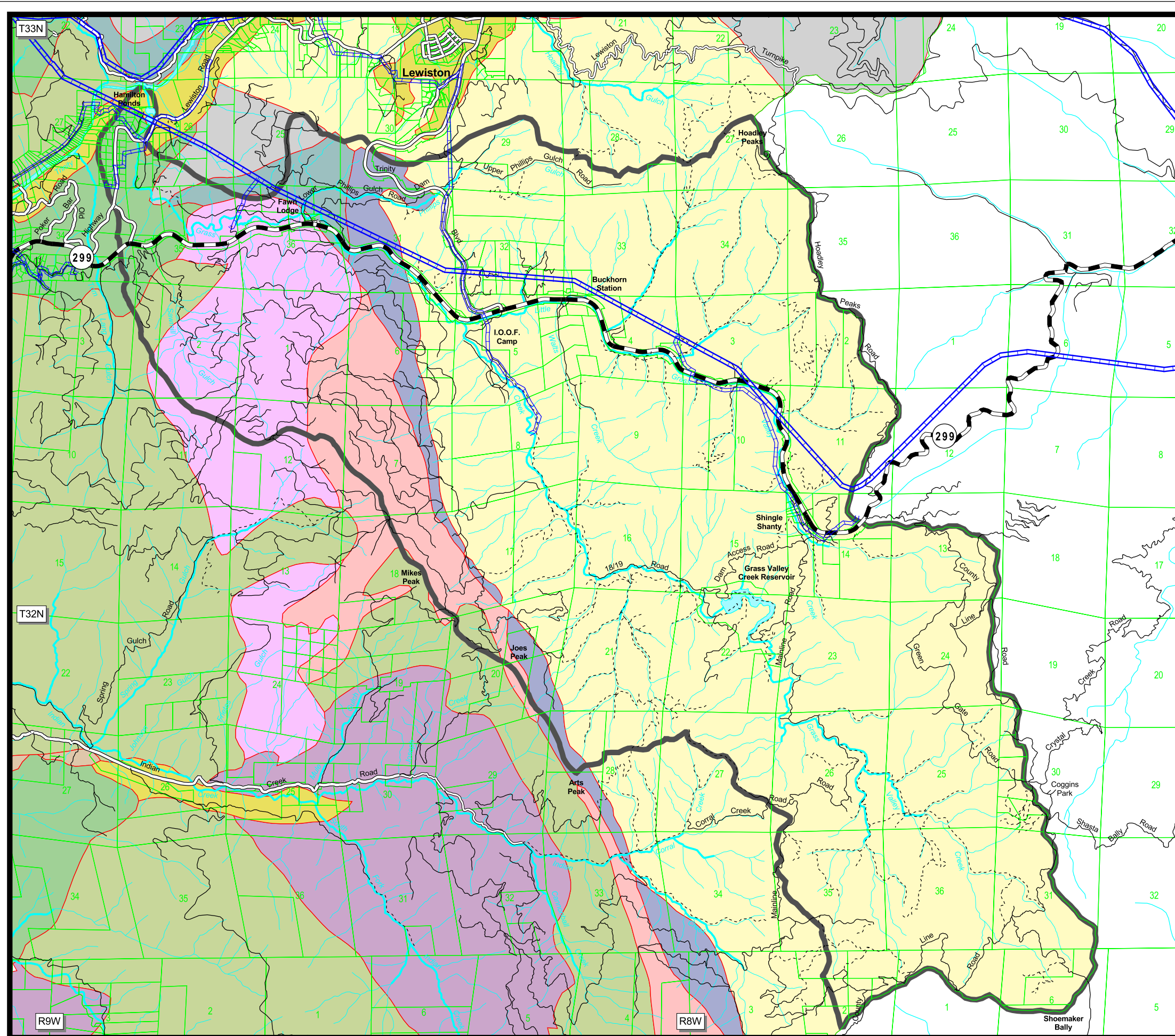


Presented By
Kenneth Baldwin, RPF 1855

Prepared By
Trinity County Resource Conservation District
 December 31, 2002



Grass Valley Creek Geology



Geologic Classifications

- CM - Mississippian marine
- Dv - Devonian metavolcanic
- KI - Lower Cretaceous marine
- Olc - Oligocene nanmarine
- Qal - Alluvium
- bi - Mesozoic basic intrusive
- gr - Mesozoic granitic
- ub - Mesozoic ultrabasic intrusive
- m - Pre-Cretaceous metamorphic
- pSs - Pre-Silurian metasedimentary
- pSv - Pre-Silurian metavolcanic

Roads

- Highway
- Paved
- Rocked
- Native
- Undrivable

Streams

- Perennial
- Intermittent

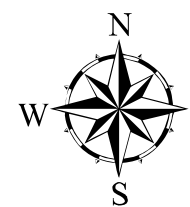
Water Bodies

Watershed Boundry

Parcels/Sections

Powerlines

- High Voltage
- Low Voltage

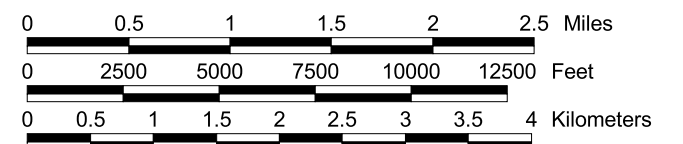


Presented By
Kenneth Baldwin, RPF 1855

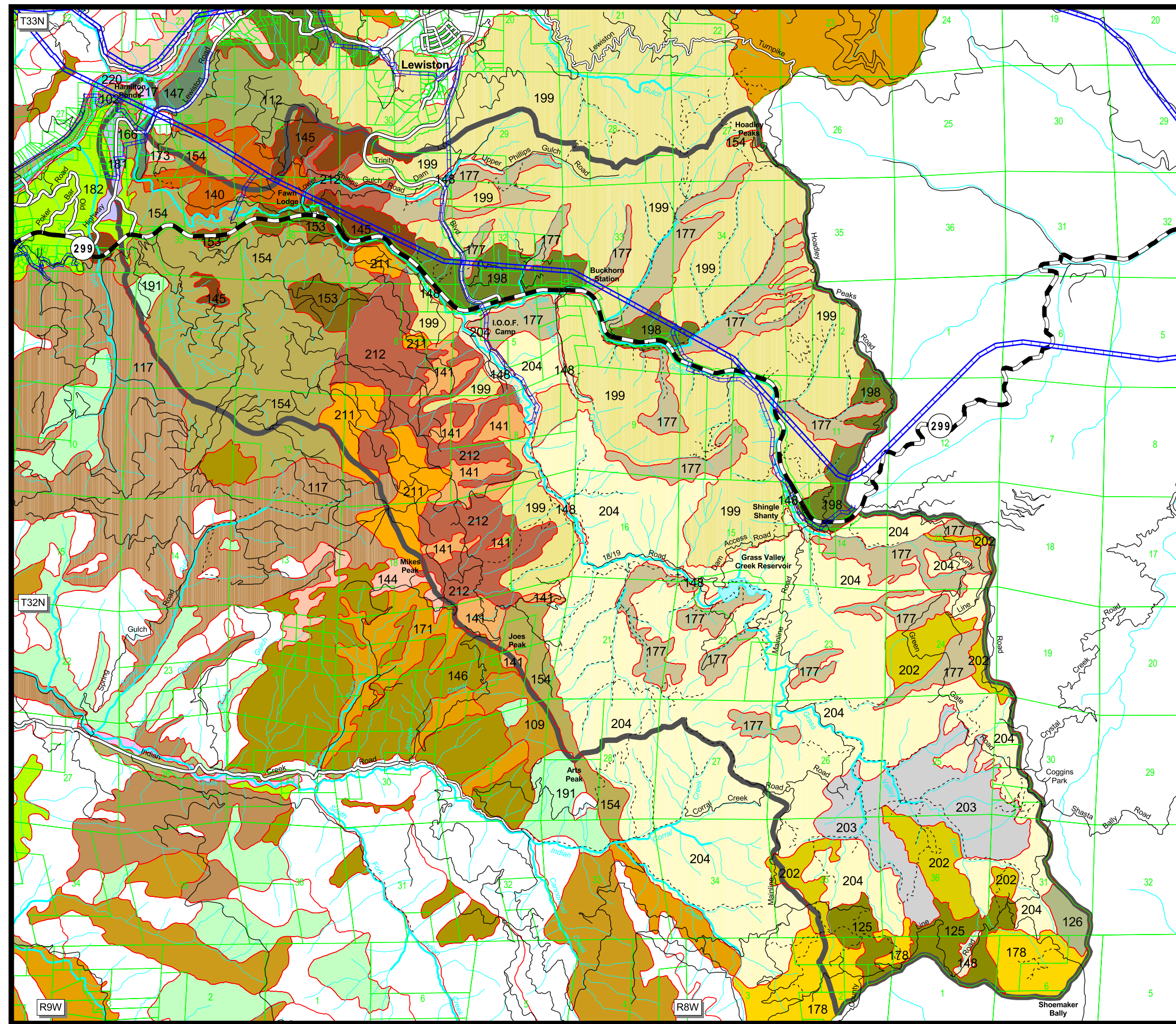
Prepared By
**Trinity County Resource
Conservation District**

December 31, 2002

Scale: 1 = 60,000



Grass Valley Creek Soils



Soil Map Units

granitic

125	126	148	177
178	198	199	202
203	204		

ultrabasic

140	141	144	211
212			

other

102	109	112	117
145	146	147	153
154	166	171	173
181	182	191	217
220			

Units Outside Watershed

Roads

- Highway
- Paved
- Rocked
- Native
- Undrivable

Streams

- Perennial
- Intermittent

Water Bodies

Watershed Boundry

Powerlines

- High Voltage
- Low Voltage

Parcels/Sections

Presented By
Kenneth Baldwin, RPF 1855

Prepared By
Trinity County Resource Conservation District
December 31, 2002

Scale: 1 = 60,000

0 0.5 1 1.5 2 2.5 Miles

0 2500 5000 7500 10000 12500 Feet

0 0.5 1 1.5 2 2.5 3 3.5 4 Kilometers

N
W E
S