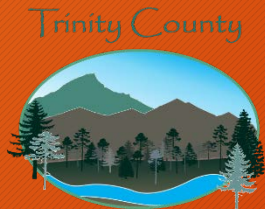


# Trinity County Community Wildfire Protection Plan 2020 Update

## Projects Mapped and Priority



Resource Conservation District

Amelia Fleitz

530-623-6004 x 208

[afleitz@tcrd.net](mailto:afleitz@tcrd.net)

This project is funded by CAL FIRE



# Trinity County Fire Protection Planning

- Trinity County Fire Safe Council
- History and Purpose
  - Trinity County has been a leader in community wildfire protection planning.
- Revision process a grant from CAL FIRE



# Trinity County Fire Safe Council

Seeks to improve cooperation and coordination in all aspects of wildfire management in Trinity County.

- Meet every fourth Thursday at 1pm via Zoom
- Next meeting - January 28, 1pm



*Trinity County*  
**FIRE SAFE COUNCIL**





# CWPP Achievements

- TCRCDD has brought \$2.9 million of fuels related work to Trinity County over the last 5 years
  - Federal funds, state funds, private money and the labor of citizens
  - \$8.5 million over the last 20 years
- Work implemented around every major Trinity County community



# Community Wildfire Protection Projects

- Overview of meeting process
  - Mapping project priorities
  - Identifying new assets at risk
- Types of projects that accomplish community protection objectives
  - Defensible space - home ignition zone
  - Shaded fuelbreaks - roads and ridges
  - Strategic landscape thinning
  - Prescribed fire
  - Maintenance of fuels reduction treatments



Photo: 2015 CWPP Update Mapping Exercise

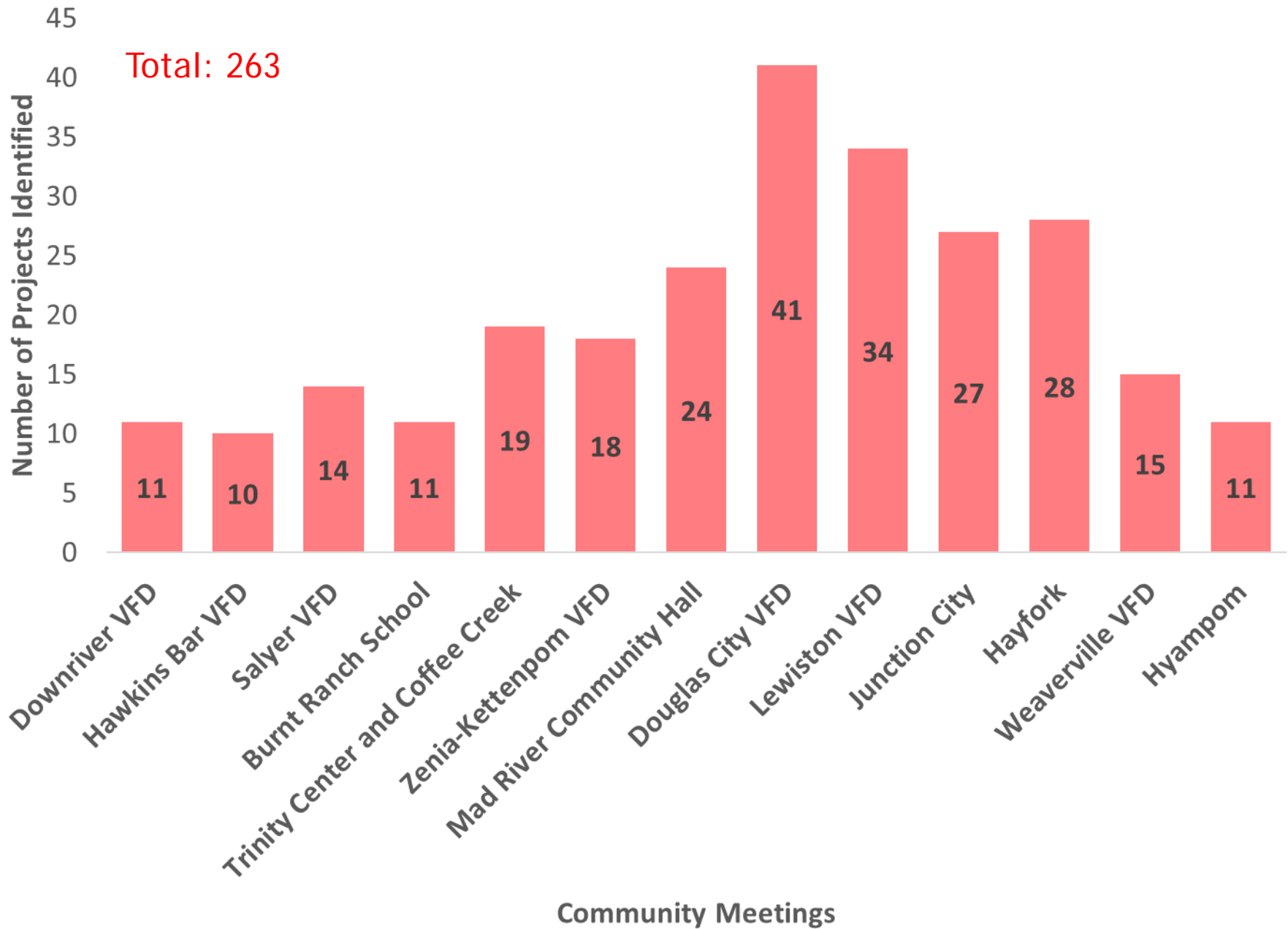


# In Person Mapping



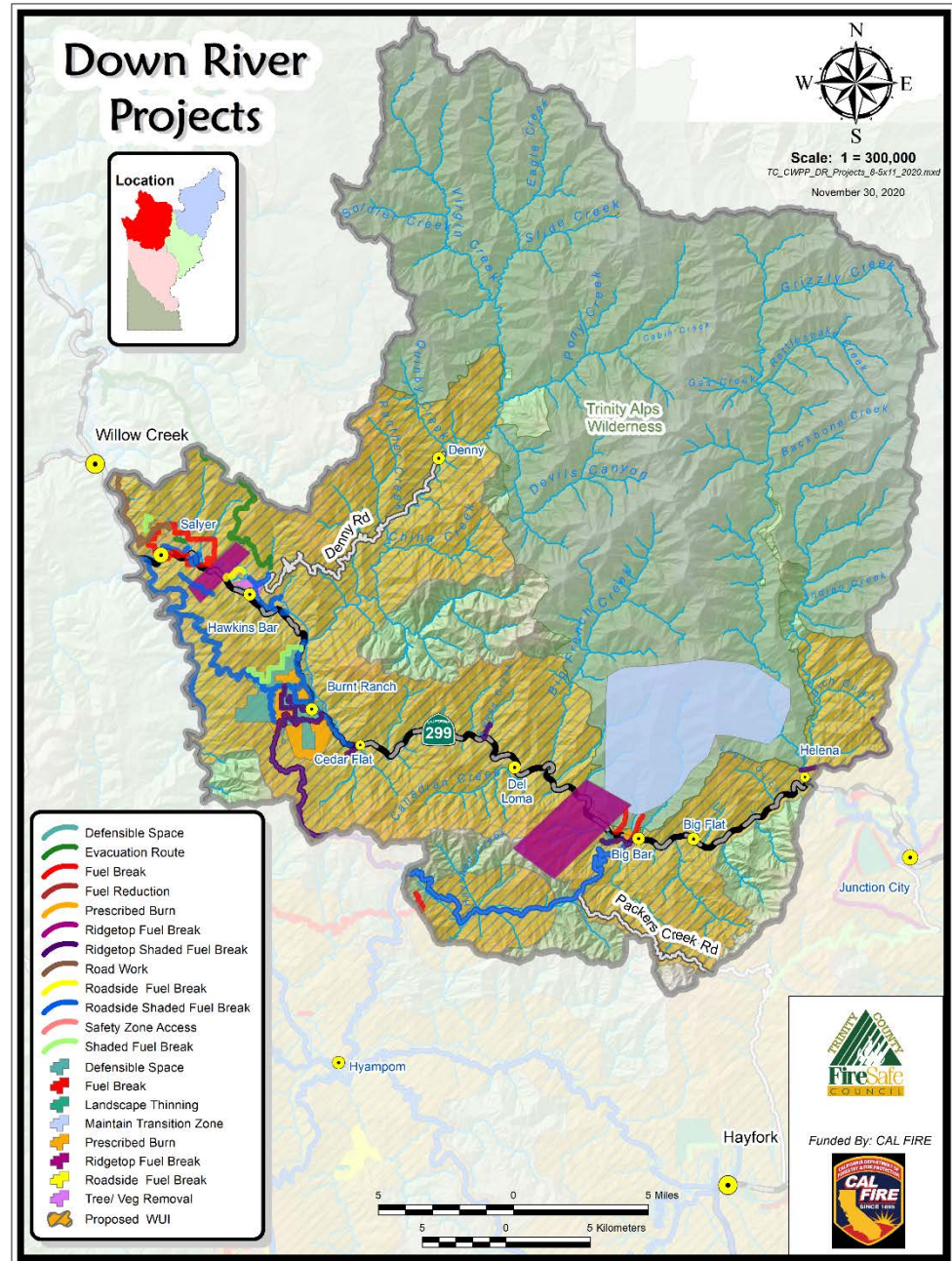








# Down River



# Down River

Project ID	ID Name	Project Type	WUI Proximity	Infrastructure Proximity	Fire History	Wildfire Ingress		Score Totals	Priority Rank
						Hazard Potential	Egress		
DR047	South Fork Rd	Roadside Shaded Fuel Break	1	1	1	1	1	5	1
DR012	Pattison Ranch Rd	Ridgetop Shaded Fuel Break	1	1	1	2	1	6	2
DR006	Friedrich Rd	Ridgetop Shaded Fuel Break	1	2	1	1	3	8	3
DR008	Hennessey Rd Evac Rt	Ridgetop Shaded Fuel Break	1	2	1	1	3	8	3
DR021	Denny Rd Fuel break/bridge to Coon Creek Rd	Roadside Shaded Fuel Break	1	2	1	2	2	8	3
DR022	SuzyQ Rd	Roadside Fuel Break	1	1	1	2	3	8	3
DR027	Ammon Rd	Roadside Shaded Fuel Break	1	1	1	2	3	8	3
DR050	Oden Flat Area	Roadside Shaded Fuel Break	1	1	1	2	3	8	3
DR052	Peach Tree to Sharp Creek	Evacuation Route	1	2	1	1	3	8	3



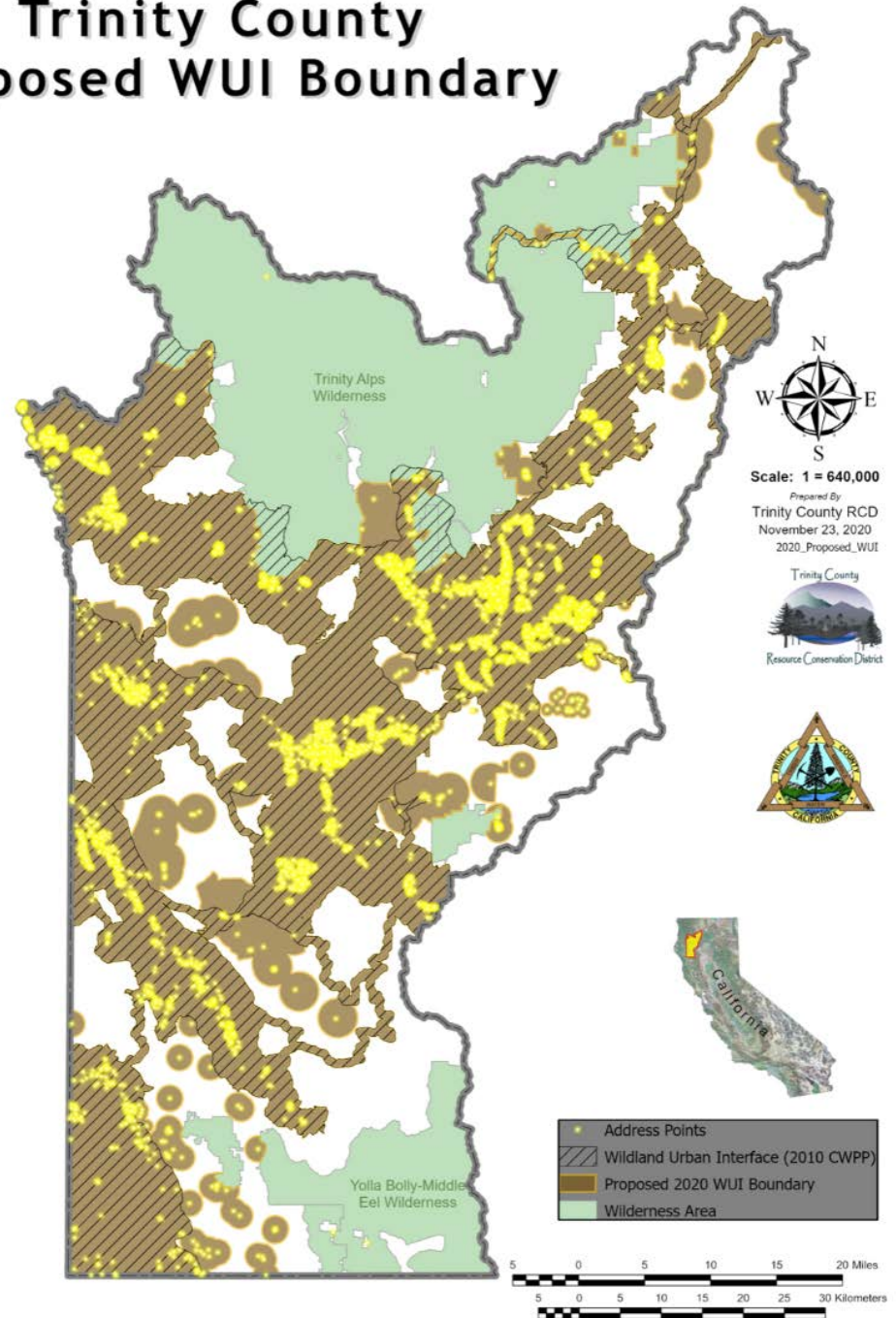
# Down River

Project ID	ID Name	Project Type	WUI Proximity	Infrastructure Proximity	Fire History	Wildfire Hazard Potential	Ingress / Egress	Score Totals	Priority Rank
DR047	South Fork Rd	Roadside Shaded Fuel Break	1	1	1	1	1	5	1
DR012	Pattison Ranch Rd	Ridgetop Shaded Fuel Break	1	1	1	2	1	6	2
DR006	Friedrich Rd	Ridgetop Shaded Fuel Break	1	2	1	1	3	8	3
DR008	Hennessey Rd Evac Rt	Ridgetop Shaded Fuel Break	1	2	1	1	3	8	3
DR021	Denny Rd Fuel break/bridge to Coon Creek Rd	Roadside Shaded Fuel Break	1	2	1	2	2	8	3
DR022	SuzyQ Rd	Roadside Fuel Break	1	1	1	2	3	8	3
DR027	Ammon Rd	Roadside Shaded Fuel Break	1	1	1	2	3	8	3
DR050	Oden Flat Area	Roadside Shaded Fuel Break	1	1	1	2	3	8	3
DR052	Peach Tree to Sharp Creek	Evacuation Route	1	2	1	1	3	8	3

# WUI

Wildland  
Urban  
Interface

## Trinity County Proposed WUI Boundary





# WUI Proximity

## **WUI Proximity:**

Projects were analyzed and given points ranging from 1 to 5 depending on their relative position & proximity.

- 1: > 75% in WUI
- 2: 51- 75% in WUI
- 3: 26- 50% in WUI
- 4: 1- 24% in WUI
- 5: Out of WUI

# Down River

Project ID	ID Name	Project Type	WUI Proximity	Infrastructure Proximity	Fire History	Wildfire Hazard Potential	Ingress / Egress	Score Totals	Priority Rank
DR047	South Fork Rd	Roadside Shaded Fuel Break	1	1	1	1	1	5	1
DR012	Pattison Ranch Rd	Ridgetop Shaded Fuel Break	1	1	1	2	1	6	2
DR006	Friedrich Rd	Ridgetop Shaded Fuel Break	1	2	1	1	3	8	3
DR008	Hennessey Rd Evac Rt	Ridgetop Shaded Fuel Break	1	2	1	1	3	8	3
DR021	Denny Rd Fuel break/bridge to Coon Creek Rd	Roadside Shaded Fuel Break	1	2	1	2	2	8	3
DR022	SuzyQ Rd	Roadside Fuel Break	1	1	1	2	3	8	3
DR027	Ammon Rd	Roadside Shaded Fuel Break	1	1	1	2	3	8	3
DR050	Oden Flat Area	Roadside Shaded Fuel Break	1	1	1	2	3	8	3
DR052	Peach Tree to Sharp Creek	Evacuation Route	1	2	1	1	3	8	3



# Infrastructure Proximity

Proximity to infrastructure was ranked as follows:

1. >75% within 100' of buffer
2. >75% within 100-500' of buffer
3. >75% within 1000' of buffer
4. >75% within 1 mile of buffer
5. >1 mile

Infrastructure include: airports, ambulances, bridges, cell towers, clean air facilities, community centers, electrical substations, gas pipeline, guard stations, fire station, health clinic, helicopter pads, hospital, law enforcement, police stations, post office, power lines, public buildings, safety zones, schools, senior centers

Additions: national and state historic infrastructure, water district infrastructure and gas stations and stores

# Down River

Project ID	ID Name	Project Type	WUI Proximity	Infrastructure Proximity	Fire History	Wildfire Hazard Potential	Ingress / Egress	Score Totals	Priority Rank
DR047	South Fork Rd	Roadside Shaded Fuel Break	1	1	1	1	1	5	1
DR012	Pattison Ranch Rd	Ridgetop Shaded Fuel Break	1	1	1	2	1	6	2
DR006	Friedrich Rd	Ridgetop Shaded Fuel Break	1	2	1	1	3	8	3
DR008	Hennessey Rd Evac Rt	Ridgetop Shaded Fuel Break	1	2	1	1	3	8	3
DR021	Denny Rd Fuel break/bridge to Coon Creek Rd	Roadside Shaded Fuel Break	1	2	1	2	2	8	3
DR022	SuzyQ Rd	Roadside Fuel Break	1	1	1	2	3	8	3
DR027	Ammon Rd	Roadside Shaded Fuel Break	1	1	1	2	3	8	3
DR050	Oden Flat Area	Roadside Shaded Fuel Break	1	1	1	2	3	8	3
DR052	Peach Tree to Sharp Creek	Evacuation Route	1	2	1	1	3	8	3

# Fire History

1. Prior to 2000 or no history
2. 2000-2004
3. 2005-2009
4. 2010-2014
5. 2015-2020



# Down River

Project ID	ID Name	Project Type	WUI Proximity	Infrastructure Proximity	Fire History	Wildfire Hazard Potential	Ingress / Egress	Score Totals	Priority Rank
DR047	South Fork Rd	Roadside Shaded Fuel Break	1	1	1	1	1	5	1
DR012	Pattison Ranch Rd	Ridgetop Shaded Fuel Break	1	1	1	2	1	6	2
DR006	Friedrich Rd	Ridgetop Shaded Fuel Break	1	2	1	1	3	8	3
DR008	Hennessey Rd Evac Rt	Ridgetop Shaded Fuel Break	1	2	1	1	3	8	3
DR021	Denny Rd Fuel break/bridge to Coon Creek Rd	Roadside Shaded Fuel Break	1	2	1	2	2	8	3
DR022	SuzyQ Rd	Roadside Fuel Break	1	1	1	2	3	8	3
DR027	Ammon Rd	Roadside Shaded Fuel Break	1	1	1	2	3	8	3
DR050	Oden Flat Area	Roadside Shaded Fuel Break	1	1	1	2	3	8	3
DR052	Peach Tree to Sharp Creek	Evacuation Route	1	2	1	1	3	8	3

# Wildfire Hazard Potential

## Original WHP Raster Classification

- 1: Very Low
- 2: Low
- 3: Moderate
- 4: High
- 5: Very High
- 6: Non- burnable
- 7: Water



- 1: Very High Priority
- 2: High Priority
- 3: Moderate Priority
- 4: Low & Very Low Priority
- 5: Non- burnable & Water

# Down River

Project ID	ID Name	Project Type	WUI Proximity	Infrastructure Proximity	Fire History	Wildfire Hazard Potential	Ingress / Egress	Score Totals	Priority Rank
DR047	South Fork Rd	Roadside Shaded Fuel Break	1	1	1	1	1	5	1
DR012	Pattison Ranch Rd	Ridgetop Shaded Fuel Break	1	1	1	2	1	6	2
DR006	Friedrich Rd	Ridgetop Shaded Fuel Break	1	2	1	1	3	8	3
DR008	Hennessey Rd Evac Rt	Ridgetop Shaded Fuel Break	1	2	1	1	3	8	3
DR021	Denny Rd Fuel break/bridge to Coon Creek Rd	Roadside Shaded Fuel Break	1	2	1	2	2	8	3
DR022	SuzyQ Rd	Roadside Fuel Break	1	1	1	2	3	8	3
DR027	Ammon Rd	Roadside Shaded Fuel Break	1	1	1	2	3	8	3
DR050	Oden Flat Area	Roadside Shaded Fuel Break	1	1	1	2	3	8	3
DR052	Peach Tree to Sharp Creek	Evacuation Route	1	2	1	1	3	8	3



# Ingress/Egress

Factors that went into the Cal Fire ranking include:

Fuel Rating Flame Length

Slope Class

Road Position on Slope

Length of Road

Residences

Access

Road Rating

Road Speed

Converted to a five point scale for roads that need to be addressed first with a score of 1 and roads to be delayed 2-5.

# Down River

Project ID	ID Name	Project Type	WUI Proximity	Infrastructure Proximity	Fire History	Wildfire Hazard Potential	Ingress / Egress	Score Totals	Priority Rank
DR047	South Fork Rd	Roadside Shaded Fuel Break	1	1	1	1	1	5	1
DR012	Pattison Ranch Rd	Ridgetop Shaded Fuel Break	1	1	1	2	1	6	2
DR006	Friedrich Rd	Ridgetop Shaded Fuel Break	1	2	1	1	3	8	3
DR008	Hennessey Rd Evac Rt	Ridgetop Shaded Fuel Break	1	2	1	1	3	8	3
DR021	Denny Rd Fuel break/bridge to Coon Creek Rd	Roadside Shaded Fuel Break	1	2	1	2	2	8	3
DR022	SuzyQ Rd	Roadside Fuel Break	1	1	1	2	3	8	3
DR027	Ammon Rd	Roadside Shaded Fuel Break	1	1	1	2	3	8	3
DR050	Oden Flat Area	Roadside Shaded Fuel Break	1	1	1	2	3	8	3
DR052	Peach Tree to Sharp Creek	Evacuation Route	1	2	1	1	3	8	3

# Past Project History

## Original Proposal:

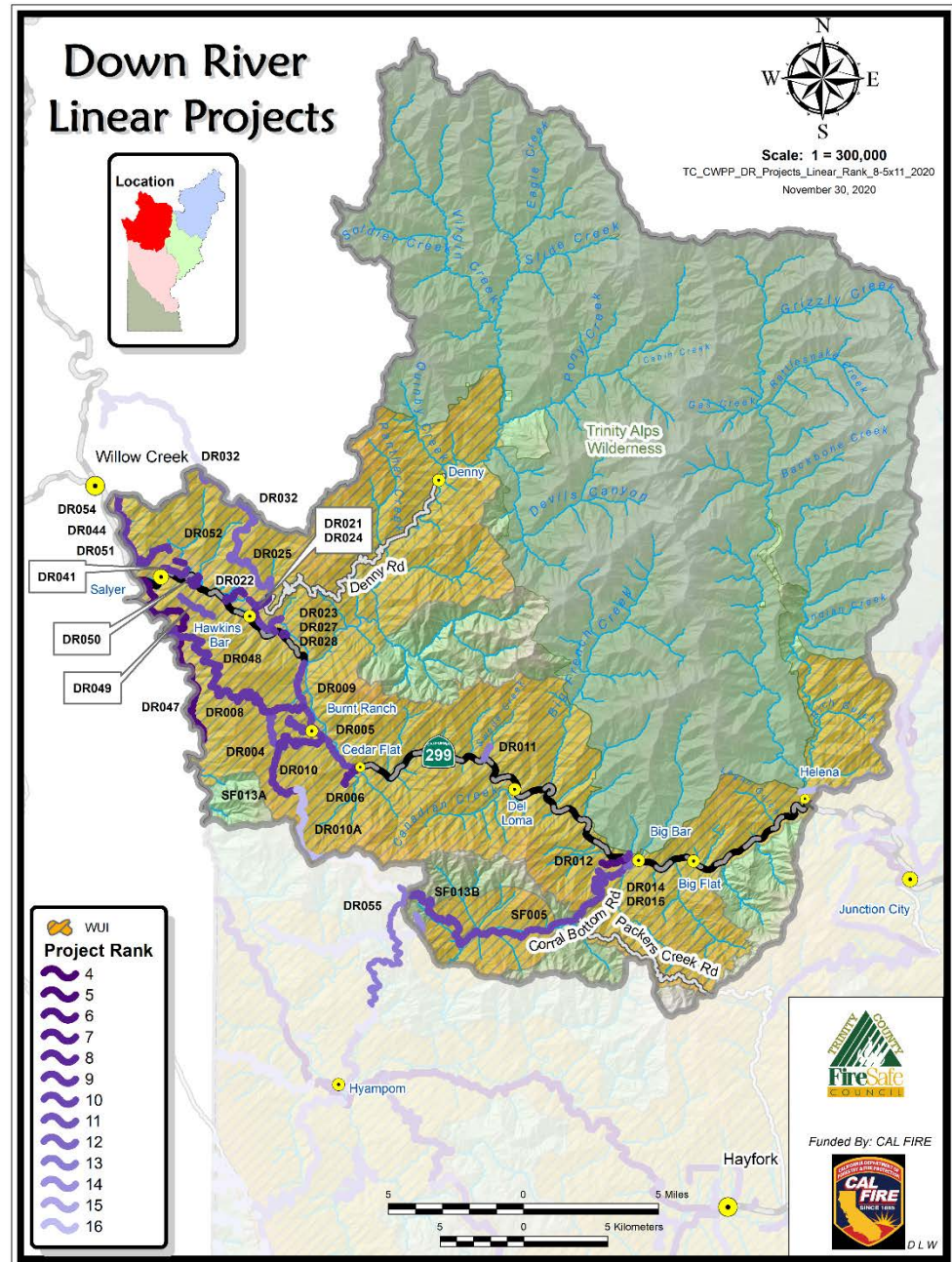
1. No recent history of treatment
2. Treatment within the last 5 years
3. Treatment within the last 5 years
4. Treatment over 5 years ago
5. Treatment over 5 years ago

## New Proposal:

1. Within  $\frac{1}{4}$  mile of a project completed within the last 5 years or is in a new project area (does not fitting in any other the other categories)
2. Within  $\frac{1}{2}$  mile of a project completed within the last 5 years
3. Within  $\frac{1}{4}$  mile of a project completed over 5 years ago
4. Within  $\frac{1}{2}$  mile of a project completed over 5 years ago



# Down River



# Down River

Project ID	ID Name	Type	Project Type	WUI Proximity	Infrastructure Proximity	Fire History	Wildfire Hazard Potential	Score Total	Priority Rank
DR007	USFS around Burnt Ranch		Prescribed Burn	1	1	1	1	4	1
DR002	Hennessey to 299	Fuel Break	Roadside Shaded Fuel Break	1	2	1	1	5	2
DR011	Private Land in core of Burnt Ranch		Defensible Space	1	1	1	2	5	2
DR013	Pattison Ranch Rd Community		Defensible Space	1	1	1	2	5	2
DR029	Trinty Village Undeveloped lots		Tree/ Veg removal	1	1	1	2	5	2
DR042	Salyer Community border	Fuel Break	Fuel Break	1	1	1	2	5	2









# North Lake

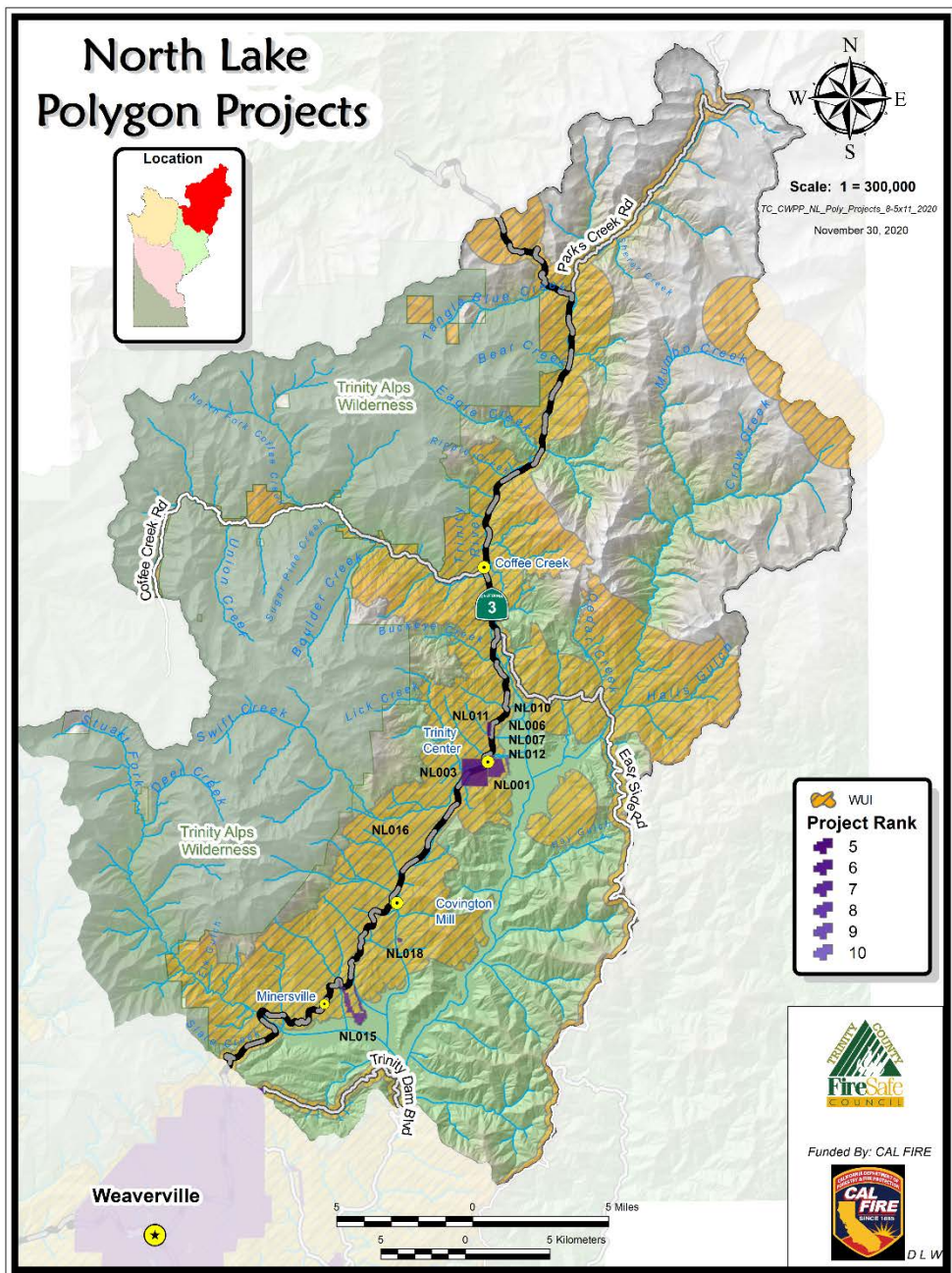
## North Lake Polygon Projects



Scale: 1 = 300,000

TC\_CWPP\_NL\_Poly\_Projects\_8-5x11\_2020

November 30, 2020



WUI

**Project Rank**

- 5
- 6
- 7
- 8
- 9
- 10



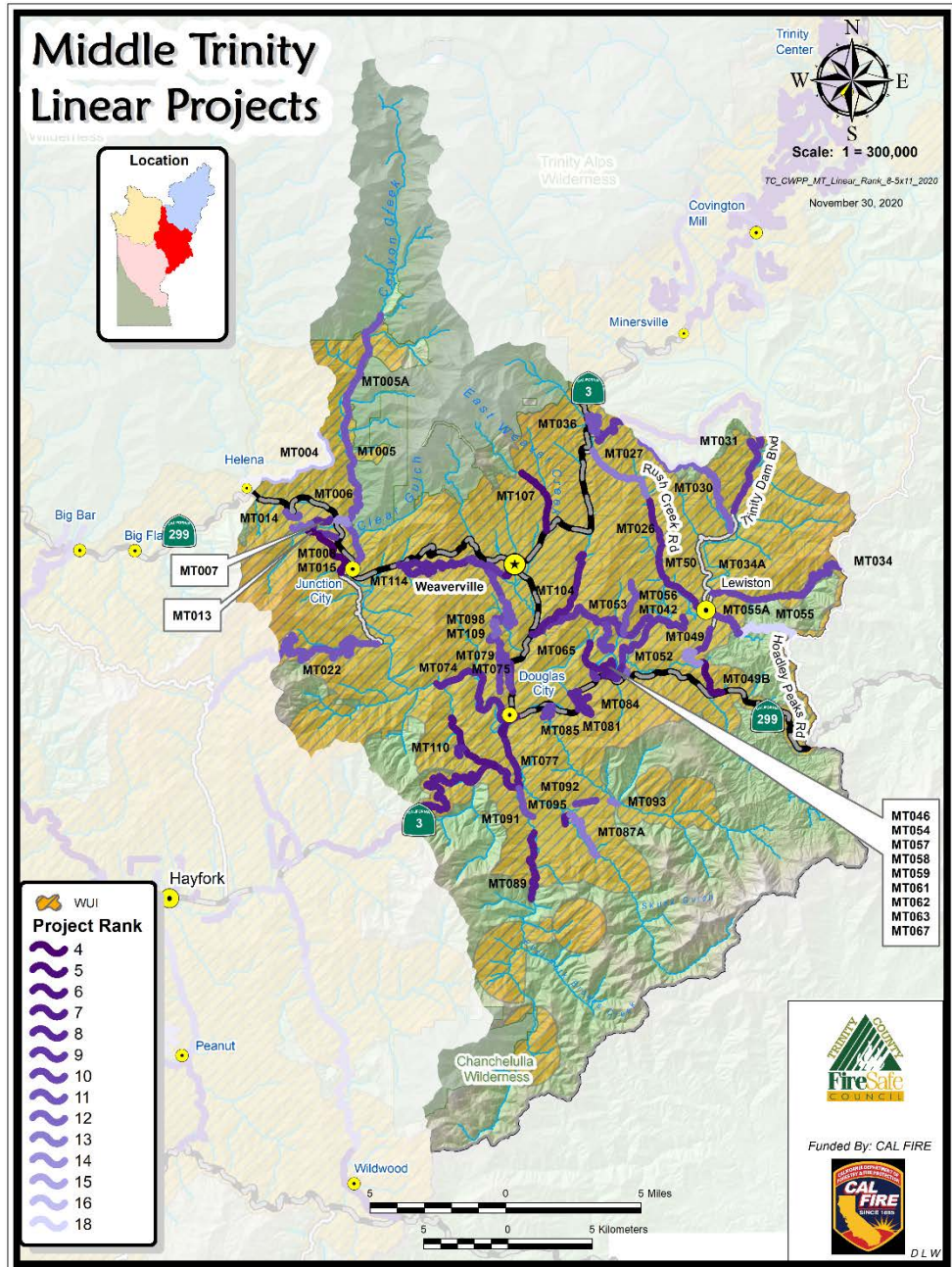
Funded By: CAL FIRE



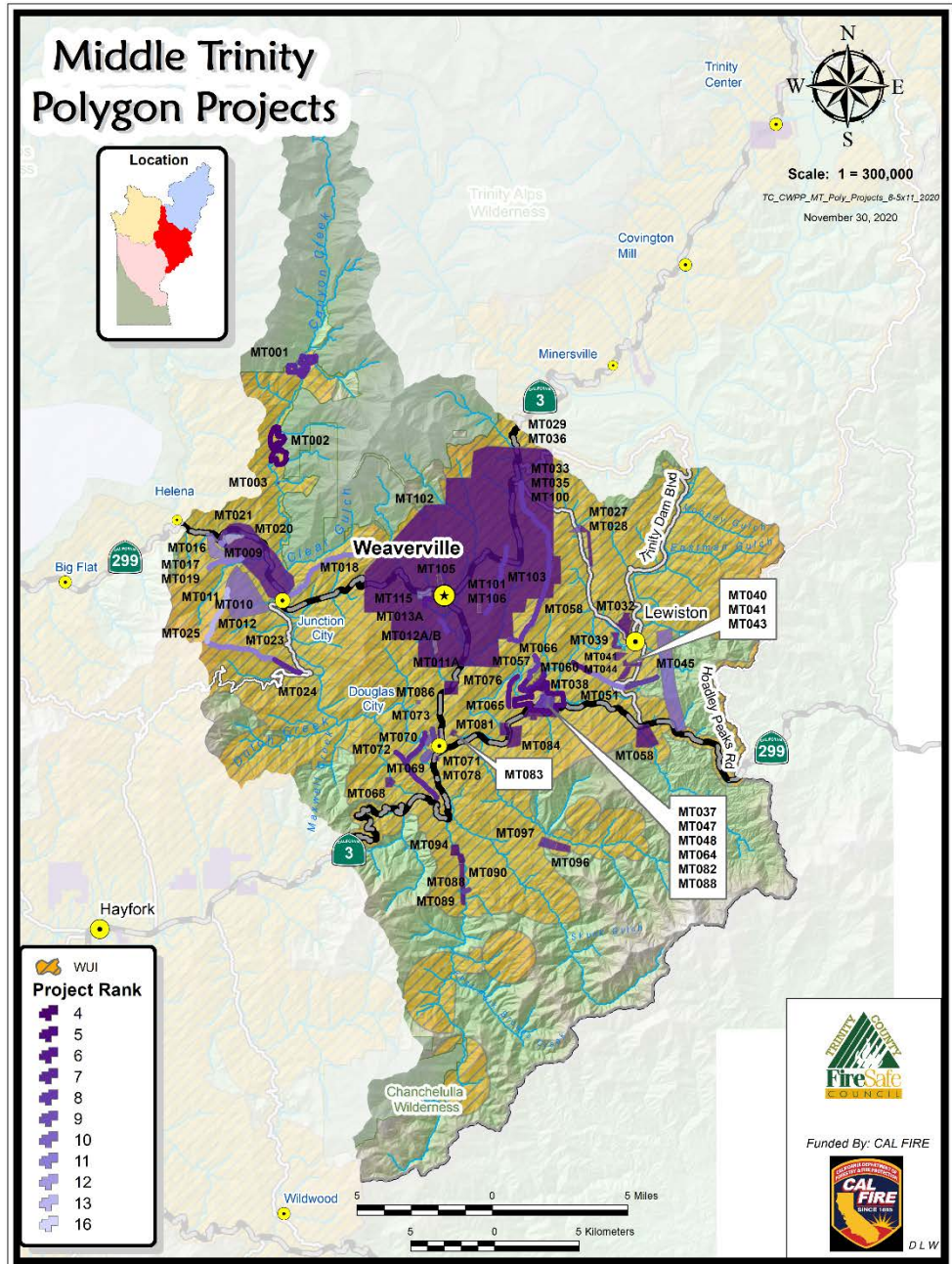
D L W



# Middle Trinity

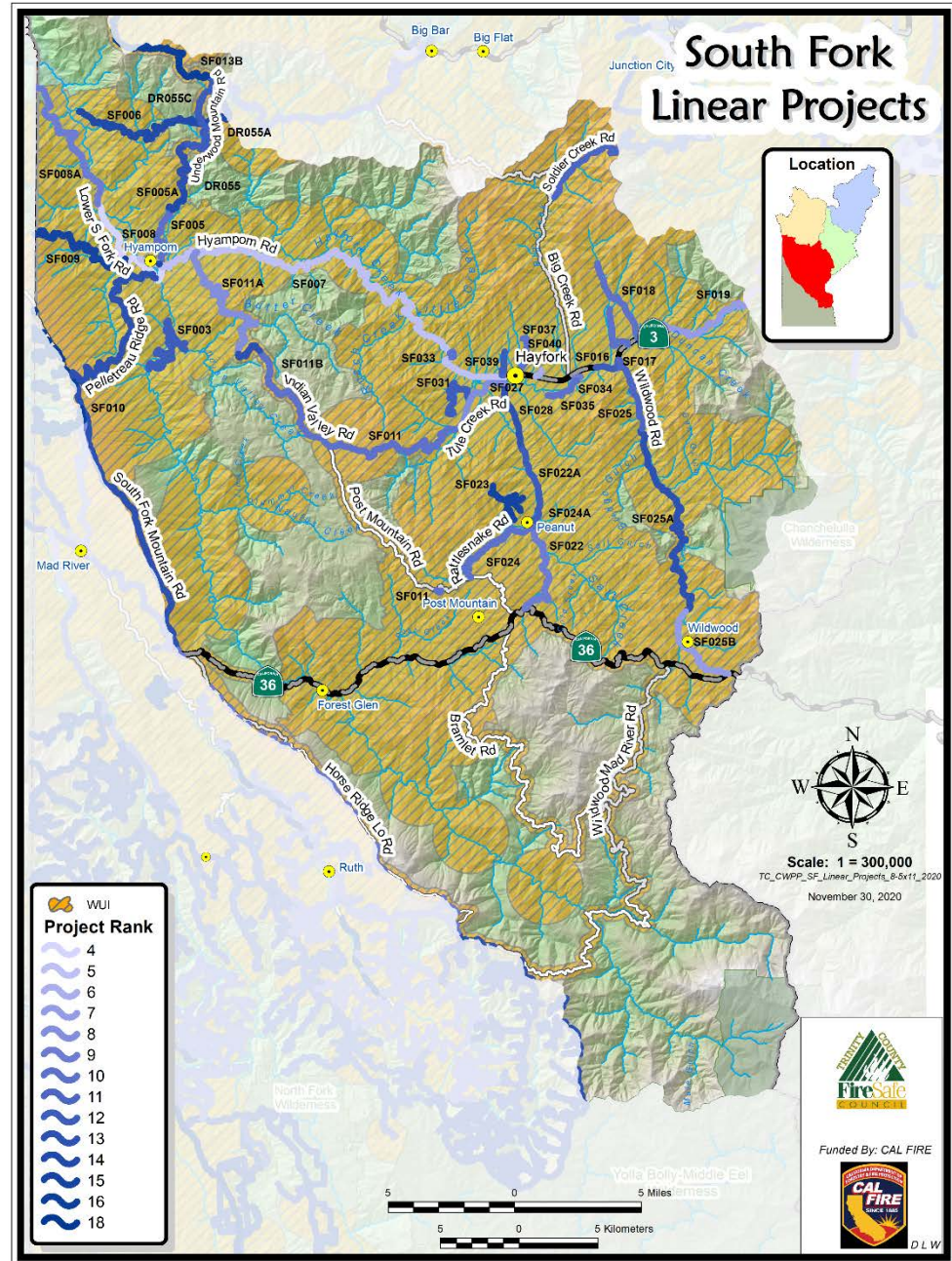


# Middle Trinity



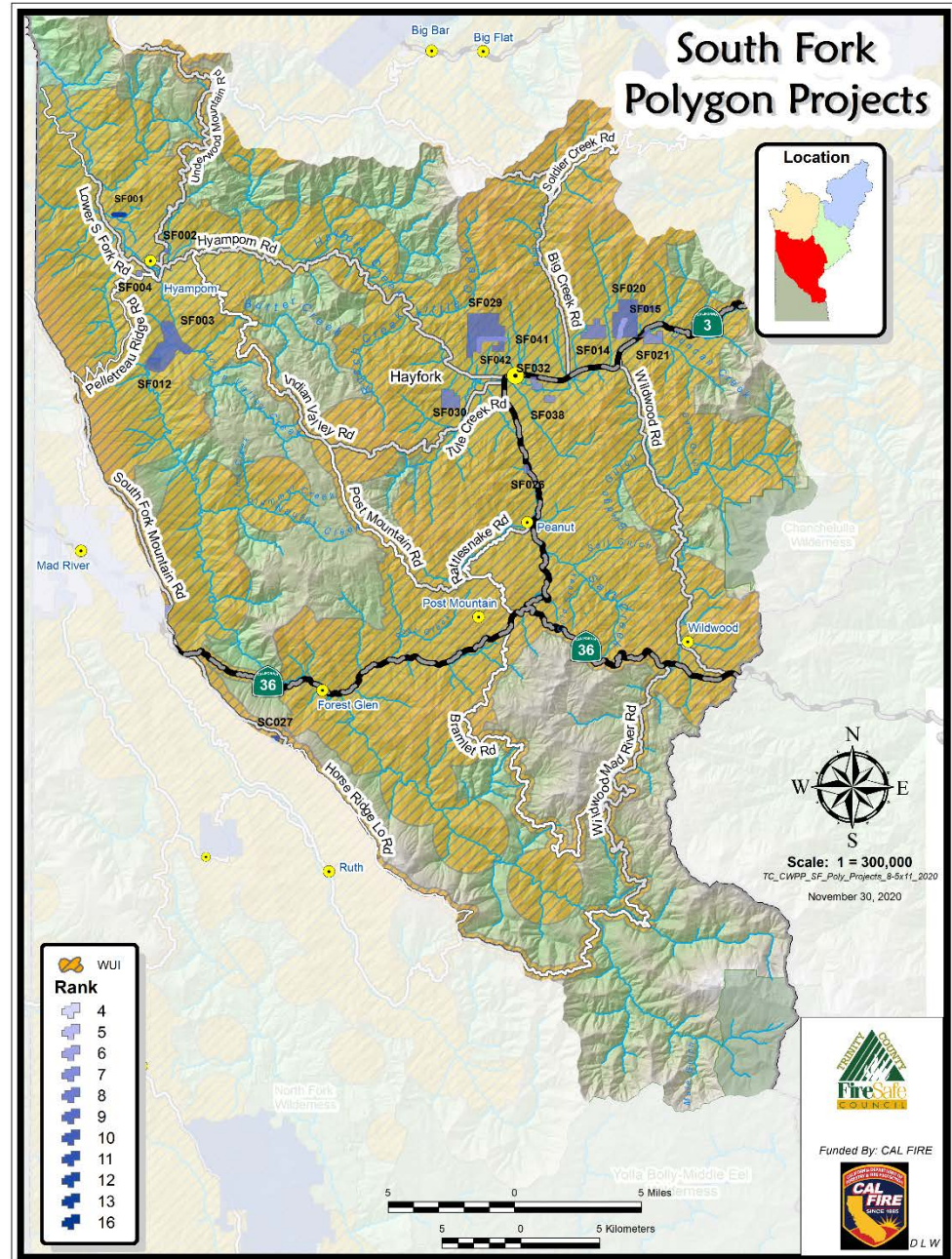


# South Fork



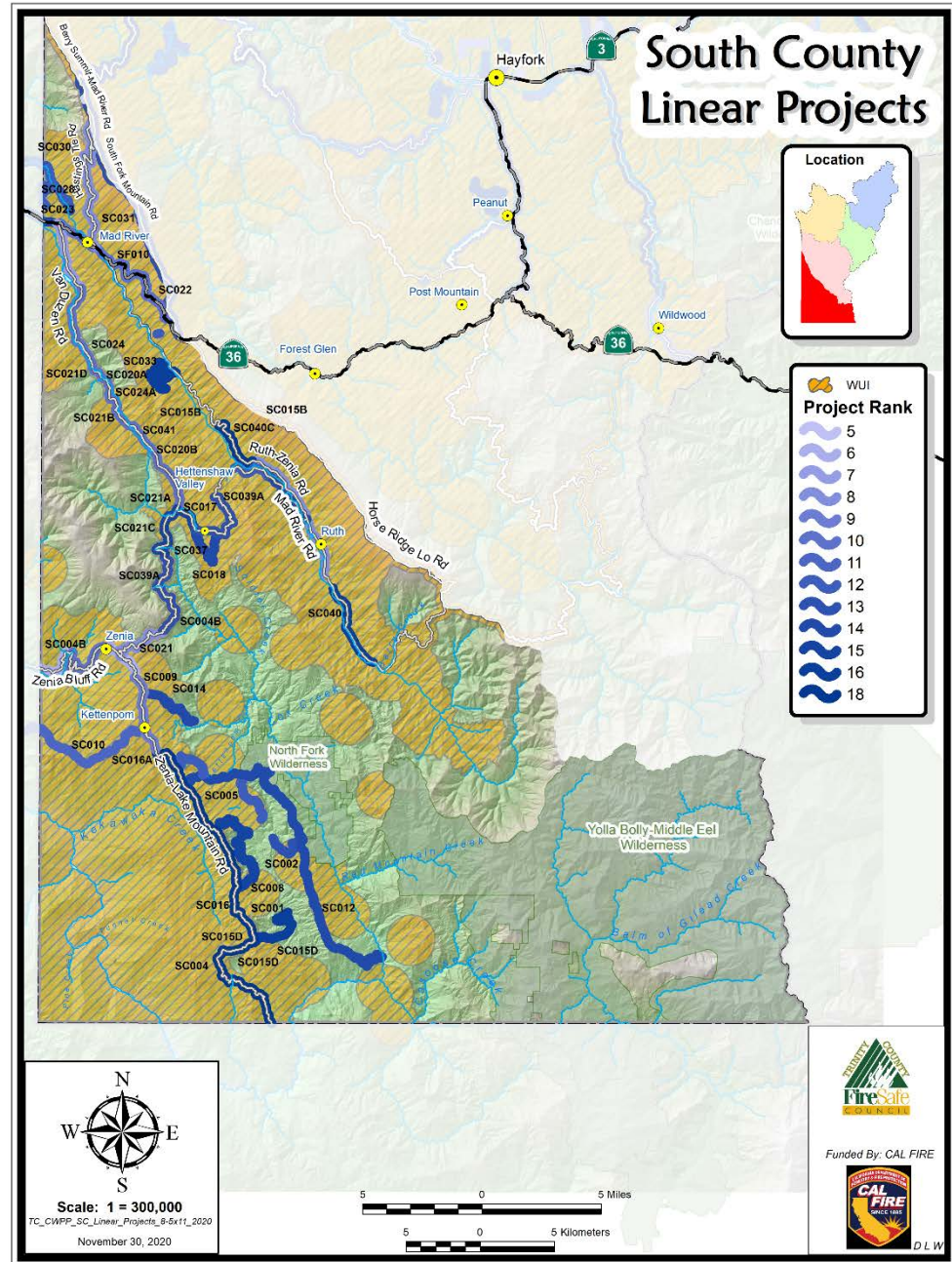


# South Fork

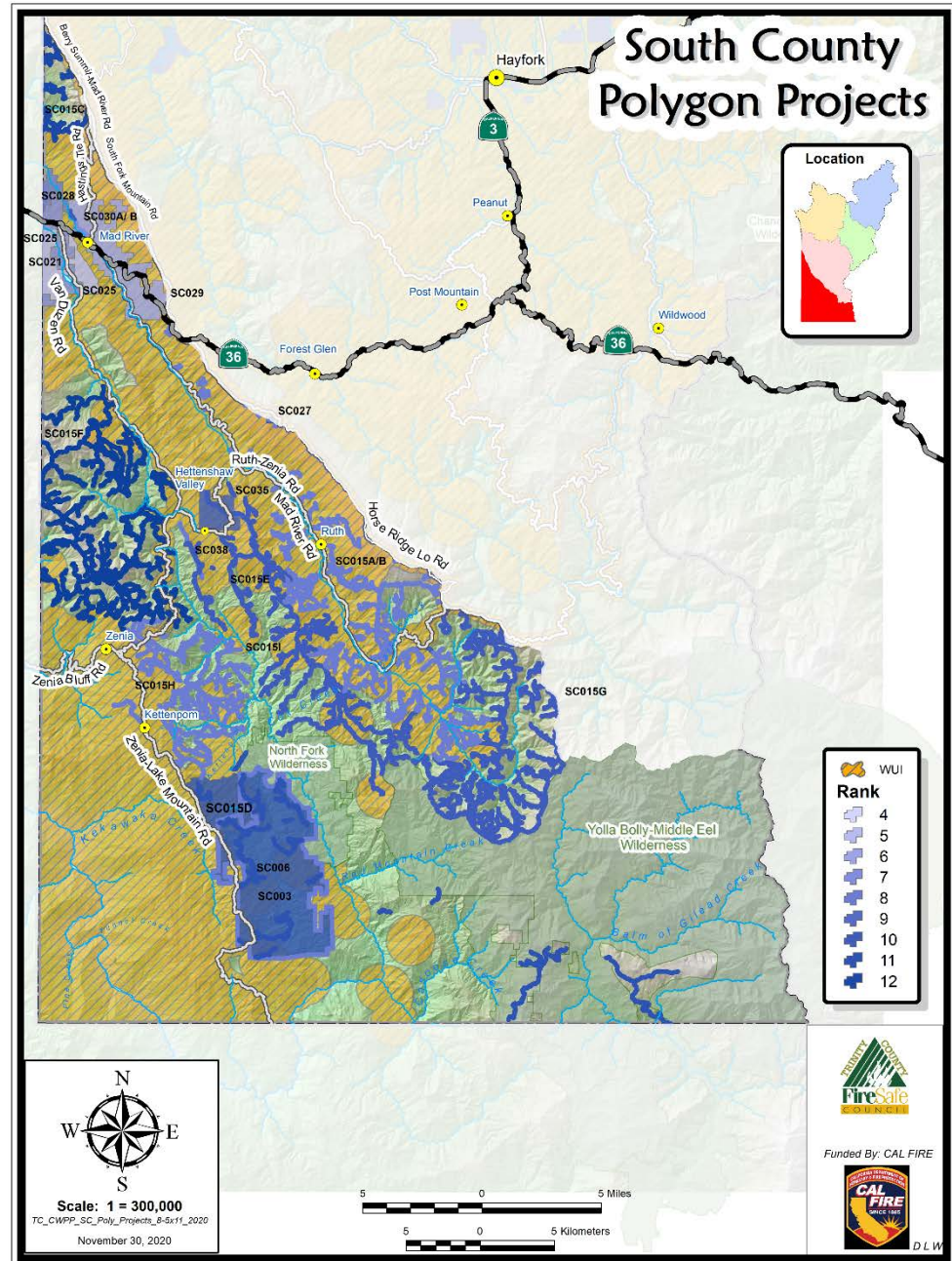




# South County



# South County





# Additional Projects? Comments?

Complete a survey:

<https://forms.gle/7CesTWqPazYTTHW37>

Email or call Amelia:

[afleitz@tcr.cd.net](mailto:afleitz@tcr.cd.net)

530-623-6004 x 208



# Thank you! Questions?

